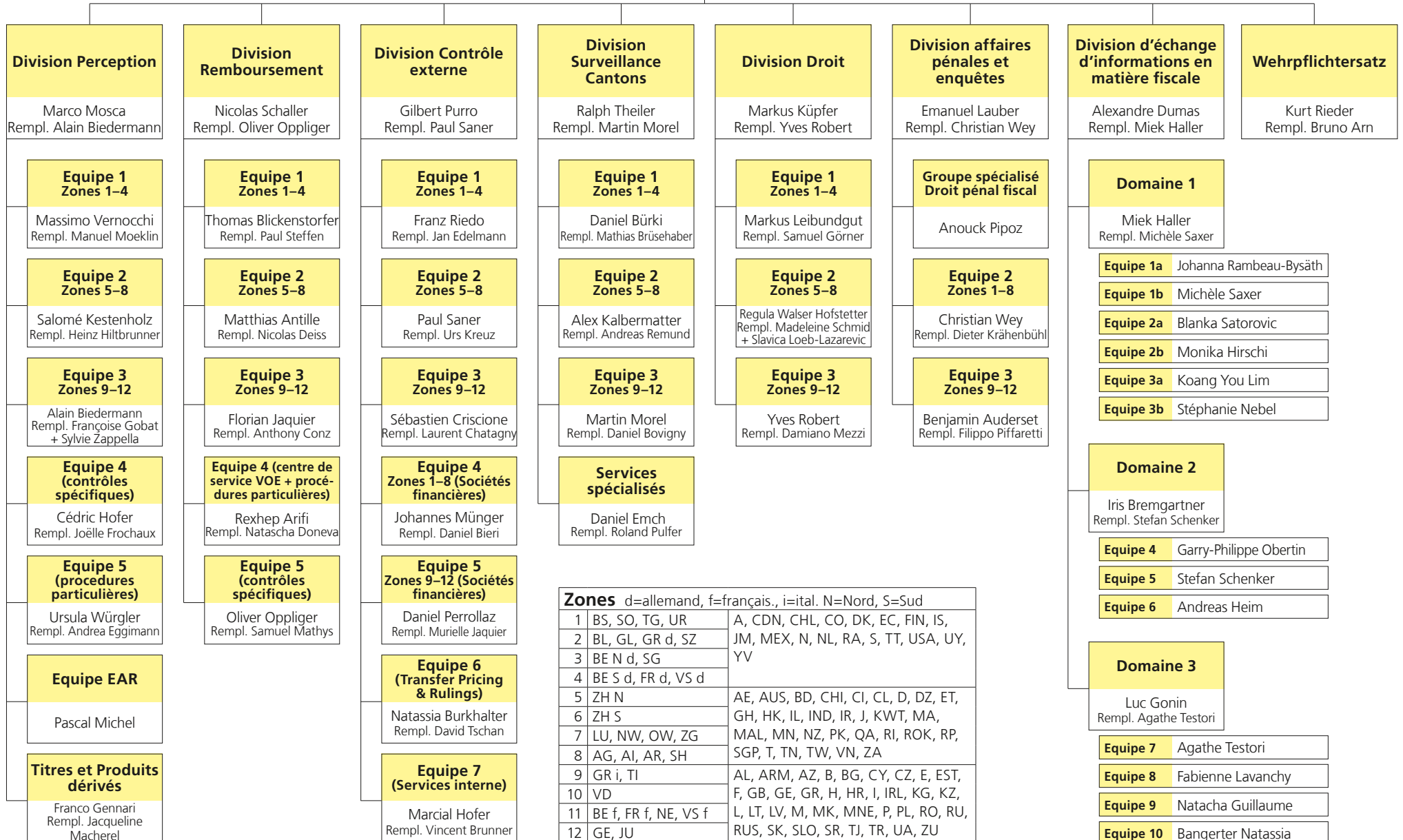




**Division principale de l'impôt
fédéral direct, de l'impôt anticipé,
des droits de timbre**

Marc Bugnon
Rempl. Markus Küpfer



Zones d=allemand, f=français., i=ital. N=Nord, S=Sud

1	BS, SO, TG, UR	A, CDN, CHL, CO, DK, EC, FIN, IS,
2	BL, GL, GR d, SZ	JM, MEX, N, NL, RA, S, TT, USA, UY,
3	BE N d, SG	YV
4	BE S d, FR d, VS d	
5	ZH N	AE, AUS, BD, CHI, CI, CL, D, DZ, ET,
6	ZH S	GH, HK, IL, IND, IR, J, KWT, MA,
7	LU, NW, OW, ZG	MAL, MN, NZ, PK, QA, RI, ROK, RP,
8	AG, AI, AR, SH	SGP, T, TN, TW, VN, ZA
9	GR i, TI	AL, ARM, AZ, B, BG, CY, CZ, E, EST,
10	VD	F, GB, GE, GR, H, HR, I, IRL, KG, KZ,
11	BE f, FR f, NE, VS f	L, LT, LV, M, MK, MNE, P, PL, RO, RU,
12	GE, JU	RUS, SK, SLO, SR, TJ, TR, UA, ZU